

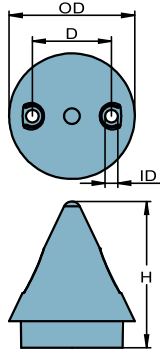
Choose
Aluminum

Al premium
SALT AND BRACKISH WATER

Anodes for
salt and brackish
water and
Magnesium

Mg fresh
FRESH WATER ONLY

for freshwater.

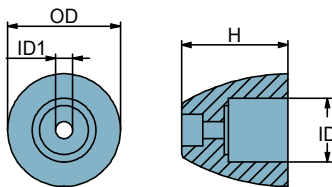


MAX PROP™ ANODES

	PID	LB	KG		OD	D	ID	H	UPC
Al	CMMP63M2BA	0.161	0.073	mm	44	27.55	4.4	51	6 28309 23724 0
Mg	CMMP63M2BM	0.101	0.046						6 28309 23725 7
Zn	CMMP63M2BZ	0.419	0.190	in	1.7	1.1	0.17	2	6 28309 23726 4



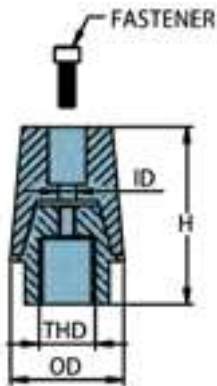
MTF™ ANODES



	PID	LB	KG		OD	ID	ID1	H	UPC
Al	CMMTF1A	0.101	0.046	mm	38	28	7	38	6 28309 23745 5
Mg	CMMTF1M	0.064	0.029						6 28309 23746 2
Zn	CMMTF1Z	0.264	0.120	in	1.5	1.10	0.27	1.5	6 28309 23747 9
Al	CMMTF2A	0.260	0.118	mm	53.5	35.5	7	50	6 28309 23748 6
Mg	CMMTF2M	0.165	0.075						6 28309 23749 3
Zn	CMMTF2Z	0.679	0.308	in	2.11	1.40	0.26	2	6 28309 23750 9
Al	CMMTF3A	0.602	0.273	mm	65.5	45	7	77	6 28309 23751 6
Mg	CMMTF3M	0.381	0.173						6 28309 23752 3
Zn	CMMTF3Z	1.567	0.711	in	2.6	1.8	0.28	3	6 28309 23753 0

Martyr
PROPELLER ANODES

RADICE™ ANODES



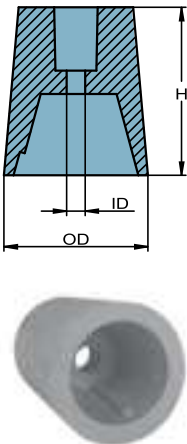
	PID	LB	KG		OD	ID	H	THD	Fastener	UPC
Al	CMLAEC3250EUA	0.45	0.21	mm	33	7	59	M16 x 1.5	M6 x 16SS	6 28309 21488 3
Mg	CMLAEC3250EUM	0.41	0.19							6 28309 21489 0
Zn	CMLAEC3250EUZ	0.61	0.28	in	1.28	0.27	2.32			6 28309 21490 6
Al	CMLAEC3300EUA	0.87	0.40	mm	44	9	74	M20 x 1.5	M8 x 25SS	6 28309 21491 3
Mg	CMLAEC3300EUM	0.77	0.35							6 28309 21492 0
Zn	CMLAEC3300EUZ	1.31	0.59	in	1.73	0.35	2.91			6 28309 21493 7
Al	CMLAEC3500EUA	1.05	0.48	mm	44	9	77	M24 x 2	M8 x 25SS	6 28309 21494 4
Mg	CMLAEC3500EUM	0.96	0.44							6 28309 21495 1
Zn	CMLAEC3500EUZ	1.41	0.64	in	1.73	0.35	3.03			6 28309 21496 8
Al	CMLAEC4000EUA	1.54	0.70	mm	50	9	93	M24 x 2	M8 x 25SS	6 28309 21497 5
Mg	CMLAEC4000EUM	1.39	0.63							6 28309 21498 2
Zn	CMLAEC4000EUZ	2.17	0.99	in	1.97	0.35	3.66			6 28309 21499 9

RADICE™ ANODES



	PID	LB	KG		OD	ID	H	THD	Fastener	UPC
Al	CMLAEC4500EUA	2.237	1.015	mm	59	10.5	103.3	M33 x 2	M10 x 25SS	6 28309 21165 3
Mg	CMLAEC4500EUM	1.995	0.905							6 28309 21193 6
Zn	CMLAEC4500EUZ	3.185	1.445	in	2.32	0.41	4.07			6 28309 21143 1
Al	CMLAEC5000A	3.589	1.628	mm	71	12	117	M36 x 3	M10 x 30SS	6 28309 19266 2
Mg	CMLAEC5000M	3.214	1.458							6 28309 19305 8
Zn	CMLAEC5000	5.330	2.418	in	2.80	0.47	4.61			6 28309 18203 8
Al	CMLAEC5500A	4.140	1.878	mm	72	11	118.5	M40 X3	M10 x 30SS	6 28309 19267 9
Mg	CMLAEC5500M	3.765	1.708							6 28309 19306 5
Zn	CMLAEC5500	5.573	2.528	in	2.80	0.43	4.67			6 28309 18204 5
Al	CMLAEC6000A	6.036	2.738	mm	81	11	136	M45 X3	M10 x 30SS	6 28309 19268 6
Mg	CMLAEC6000M	5.463	2.478							6 28309 19307 2
Zn	CMLAEC6000	8.263	3.748	in	3.19	0.43	5.35			6 28309 18205 2
Al	CMLAEC10000A	9.645	4.375	mm	99	11	144	M50 X3	M10 x 30SS	6 28309 23713 4
Mg	CMLAEC10000M	8.895	4.035							6 28309 23714 1
Zn	CMLAEC10000	12.934	5.867	in	3.90	0.43	5.67			6 28309 23712 7

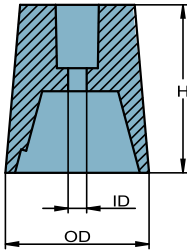
RADICE™ REPLACEMENT ANODES



	PID	LB	KG		OD	ID	H	UPC
Al	CMAN225EUA	0.108	0.049	mm	33	7	39	6 28309 20965 0
Mg	CMAN225EUM	0.068	0.031					6 28309 20986 5
Zn	CMAN225EUZ	0.264	0.120	in	1.28	0.27	1.54	6 28309 20944 5
Al	CMAN230EUA	0.282	0.128	mm	44	9	52	6 28309 20966 7
Mg	CMAN230EUM	0.178	0.081					6 28309 20987 2
Zn	CMAN230EUZ	0.716	0.325	in	1.73	0.35	2.05	6 28309 20945 2
Al	CMAN235EUA	0.242	0.110	mm	44	9	52	6 28309 20967 4
Mg	CMAN235EUM	0.154	0.070					6 28309 20988 9
Zn	CMAN235EUZ	0.610	0.277	in	1.73	0.35	2.05	6 28309 20946 9

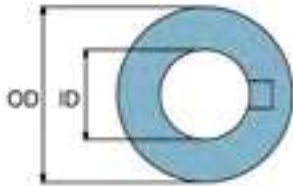
PROPELLER ANODES

RADICE™ REPLACEMENT ANODES



PID		LB	KG		OD	ID	H	UPC
Al	CMAN240EUA	0.410	0.186	mm	50	9	65	6 28309 20968 1
Mg	CMAN240EUM	0.260	0.118	in	1.97	0.35	2.56	6 28309 20989 6
Zn	CMAN240EUZ	1.036	0.470					6 28309 20947 6
Al	CMAN245EUA	0.66	0.30					mm
Mg	CMAN245EUM	0.42	0.19	in	2.32	0.41	2.91	6 28309 21188 2
Zn	CMAN245EUZ	1.61	0.73					6 28309 21140 0
Al	CMAN250A	1.014	0.460	mm	71	12	84	6 28309 19329 4
Mg	CMAN250M	0.639	0.290	in	2.8	0.5	3.3	6 28309 19330 0
Zn	CMAN250	2.755	1.250					6 28309 18004 1
Al	CMAN255A	0.99	0.45	mm	72	11	84	6 28309 19331 7
Mg	CMAN255M	0.62	0.28	in	2.8	0.4	3.3	6 28309 19332 4
Zn	CMAN255	2.47	1.12					6 28309 18005 8
Al	CMAN260A	1.57	0.71	mm	81	11	96	6 28309 19333 1
Mg	CMAN260M	0.99	0.45	in	3.2	0.4	3.8	6 28309 19334 8
Zn	CMAN260	3.88	1.76					6 28309 18006 5
Al	CMAN2100A	2.07	0.94	mm	99	11	100	6 28309 23066 1
Mg	CMAN2100M	1.32	0.60	in	3.90	0.43	3.94	6 28309 23082 1
Zn	CMAN2100Z	5.36	2.43					6 28309 23050 0

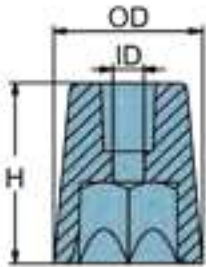
RADICE™ REPLACEMENT WASHERS



PID	LB	KG		OD	ID	Shaft	UPC
WASHRAD2225C	0.015	0.007	mm	38	17	25	6 28309 20914 8
			in	1.50	0.67		
WASHRAD30C	0.022	0.010	mm	46	21	30	6 28309 20915 5
			in	1.81	0.82		
WASHRAD35C	0.026	0.012	mm	51	25	35	6 28309 20916 2
			in	2.00	0.98		
WASHRAD40C	0.031	0.014	mm	54	25	40	6 28309 20917 9
			in	2.12	0.98		
WASHRAD45C	0.042	0.019	mm	66	34	45	6 28309 20918 6
			in	2.60	1.34		
WASHRAD50C	0.059	0.027	mm	76	37	50	6 28309 20919 3
			in	3.00	1.45		
WASHRAD55C	0.066	0.030	mm	81	41	55	6 28309 20920 9
			in	3.20	1.61		
WASHRAD60C	0.079	0.036	mm	90	46	60	6 28309 20921 6
			in	3.54	1.81		
WASHRAD100C	0.110	0.050	mm	104	52	100	6 28309 24698 3
			in	4.09	2.05		

Martyr®
PROPELLER ANODES

RADICE™ ANODES / hexagonal



	PID	LB	KG		OD	ID	H	THD	Fastener	UPC
Al	CMPNRAD225CA	0.498	0.226	mm	33	7	40	M16 x 1.5	M6 X 20	6 28309 23296 2
Mg	CMPNRAD225CM	0.465	0.211							6 28309 24366 1
Zn	CMPNRAD225C	0.643	0.292	in	1.3	0.26	1.6			6 28309 16018 0
Al	CMPNRAD30CA	0.859	0.390	mm	42	9	53	M20 x 1.5	M8 X 20	6 28309 23297 9
Mg	CMPNRAD30CM	0.782	0.355							6 28309 24367 8
Zn	CMPNRAD30C	1.219	0.553	in	1.6	0.34	2.1			6 28309 16020 3
Al	CMPNRAD35CA	1.195	0.542	mm	46	9	62	M24 x 2	M8 X 25	6 28309 23298 6
Mg	CMPNRAD35CM	1.087	0.493							6 28309 24368 5
Zn	CMPNRAD35C	1.691	0.767	in	1.8	0.34	2.4			6 28309 16022 7
Al	CMPNRAD40CA	1.713	0.777	mm	52	9	67	M24 X 2	M8 X 20	6 28309 23299 3
Mg	CMPNRAD40CM	1.569	0.712							6 28309 24369 2
Zn	CMPNRAD40C	2.334	1.059	in	2	0.34	2.6			6 28309 16024 1
Al	CMPNRAD45C	2.412	1.094	mm	61	11	76	M33 x 2	M10 X 25	6 28309 23300 6
Mg	CMPNRAD45CM	2.180	0.989							6 28309 24370 8
Zn	CMPNRAD45C	3.426	1.554	in	2.4	0.43	3			6 28309 16026 5
Al	CMPNRAD50CA	3.796	1.722	mm	72	11	83	M36 x 3	M10 x 35	6 28309 23301 3
Mg	CMPNRAD50CM	3.512	1.593							6 28309 24371 5
Zn	CMPNRAD50C	5.042	2.287	in	2.8	0.43	3.3			6 28309 16028 9
Al	CMPNRAD55CA	4.316	1.958	mm	75	11	87	M40 x 3	M10 x 35	6 28309 24244 2
Mg	CMPNRAD55CM	4.036	1.831							6 28309 24372 2
Zn	CMPNRAD55C	5.533	2.510	in	2.9	0.43	3.4			6 28309 16030 2
Al	CMPNRAD60CA	5.890	2.672	mm	83	11	98	M45 x 3	M10 x 35	6 28309 24245 9
Mg	CMPNRAD60CM	5.366	2.434							6 28309 24373 9
Zn	CMPNRAD60C	8.192	3.716	in	3.3	0.43	3.8			6 28309 16032 6
Al	CMPNRAD100AC	8.98	4.08	mm	97	11	96	M50 x 3	M10 x 35	6 28309 23775 2
Mg	CMPNRAD100MC	8.18	3.72							6 28309 23777 6
Zn	CMPNRAD100ZC	12.47	5.67	in	3.82	0.42	3.78			6 28309 23779 0

PROPELLER ANODES

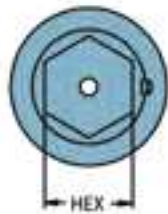
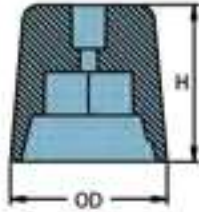
Choose
Aluminum

Al premium
SALT AND BRACKISH WATER

Anodes for
salt and brackish
water and
Magnesium

Mg fresh
FRESH WATER ONLY

for freshwater.

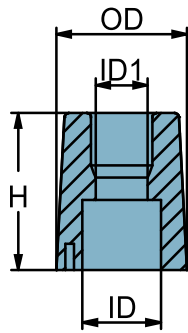


Martyr
PROPELLER ANODES

RADICE™ REPLACEMENT ANODES / hexagonal

	PID	LB	KG		OD	HEX	H	UPC
Al	CMPNRAD225A	0.092	0.042	mm	33	22	40	6 28309 19269 3
Mg	CMPNRAD225M	0.059	0.027					6 28309 19308 9
Zn	CMPNRAD225	0.242	0.110	in	1.30	0.87	1.57	6 28309 16017 3
Al	CMPNRAD30A	0.214	0.097	mm	42	27	53	6 28309 19270 9
Mg	CMPNRAD30M	0.136	0.062					6 28309 19309 6
Zn	CMPNRAD30	0.551	0.250	in	1.65	1.06	2.09	6 28309 16019 7
Al	CMPNRAD35A	0.297	0.135	mm	46	32	62	6 28309 19271 6
Mg	CMPNRAD35M	0.189	0.086					6 28309 19310 2
Zn	CMPNRAD35	0.771	0.350	in	1.81	1.26	2.44	6 28309 16021 0
Al	CMPNRAD40A	0.392	0.178	mm	52	36	67	6 28309 19272 3
Mg	CMPNRAD40M	0.249	0.113					6 28309 19311 9
Zn	CMPNRAD40	1.014	0.460	in	2.05	1.42	2.64	6 28309 16023 4
Al	CMPNRAD45A	0.639	0.290	mm	61	41	76	6 28309 19273 0
Mg	CMPNRAD45M	0.408	0.185					6 28309 19312 6
Zn	CMPNRAD45	1.653	0.750	in	2.40	1.61	2.99	6 28309 16025 8
Al	CMPNRAD50A	0.782	0.355	mm	72	46	83	6 28309 19274 7
Mg	CMPNRAD50M	0.498	0.226					6 28309 19313 3
Zn	CMPNRAD50	2.028	0.920	in	2.83	1.81	3.23	6 28309 16027 2
Al	CMPNRAD55A	0.767	0.348	mm	75	50	87	6 28309 19275 4
Mg	CMPNRAD55M	0.487	0.221					6 28309 16029 6
Zn	CMPNRAD55	1.984	0.900	in	2.95	1.97	3.43	6 28309 19314 0
Al	CMPNRAD60A	1.446	0.656	mm	83	55	98	6 28309 19276 1
Mg	CMPNRAD60M	0.921	0.418					6 28309 19315 7
Zn	CMPNRAD60	3.748	1.700	in	3.23	2.17	3.86	6 28309 16031 9
Al	CMPNRAD100A	2.109	0.957	mm	97	54	96	6 28309 23774 5
Mg	CMPNRAD100M	1.338	0.607					6 28309 23776 9
Zn	CMPNRAD100Z	5.498	2.494	in	3.82	2.13	3.78	6 28309 23778 3

REGGIANI™ ANODES



	PID	LB	KG		OD	ID	ID1	H	Shaft	UPC
Al	CMRG20A	0.072	0.033	mm	28	15	7	30	20	6 28309 23786 8
Mg	CMRG20M	0.046	0.021							6 28309 23787 5
Zn	CMRG20Z	0.189	0.086	in	1.1	0.6	0.28	1.2		6 28309 23788 2
Al	CMRG25A	0.108	0.049	mm	34	20	7	34	25	6 28309 23069 2
Mg	CMRG25M	0.068	0.031							6 28309 23085 2
Zn	CMRG25Z	0.279	0.127	in	1.3	0.8	0.28	1.3		6 28309 23053 1
Al	CMRG30A	0.279	0.127	mm	44	25	7	50	30	6 28309 23070 8
Mg	CMRG30M	0.178	0.081							6 28309 23086 9
Zn	CMRG30Z	0.725	0.329	in	1.7	1	0.27	2		6 28309 23054 8
Al	CMRG35A	0.344	0.156	mm	48	28	9	55	35	6 28309 23071 5
Mg	CMRG35M	0.218	0.099							6 28309 23087 6
Zn	CMRG35Z	0.917	0.416	in	1.9	1.1	0.34	2.2		6 28309 23055 5
Al	CMRG40A	0.416	0.189	mm	54	34	11	55	40	6 28309 23789 9
Mg	CMRG40M	0.264	0.120							6 28309 23790 5
Zn	CMRG40Z	1.080	0.490	in	2.1	1.3	0.41	2.2		6 28309 23791 2
Al	CMRG45A	0.736	0.334	mm	64	40	12	63	45	6 28309 23792 9
Mg	CMRG45M	0.469	0.213							6 28309 23793 6
Zn	CMRG45Z	1.909	0.866	in	2.5	1.6	0.47	2.5		6 28309 23794 3
Al	CMRG50A	1.206	0.547	mm	74	45	11	75	50	6 28309 23795 0
Mg	CMRG50M	0.767	0.348							6 28309 23796 7
Zn	CMRG50Z	3.126	1.418	in	2.9	1.8	0.44	3		6 28309 23797 4
Al	CMRG55A	1.345	0.610	mm	78	49	10.5	75	55	6 28309 23798 1
Mg	CMRG55M	0.882	0.400							6 28309 23799 8
Zn	CMRG55Z	3.386	1.536	in	3.1	1.9	0.41	3		6 28309 23800 1
Al	CMRG60A	2.052	0.931	mm	88	55	10.5	85	60	6 28309 23801 8
Mg	CMRG60M	1.367	0.620							6 28309 23802 5
Zn	CMRG60Z	5.062	2.296	in	3.5	2.2	0.41	3.3		6 28309 23803 2

PROPELLER ANODES